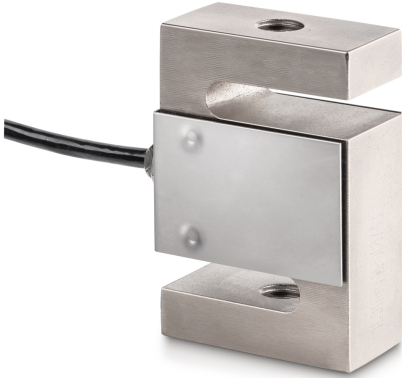


KERN CS 2500-3P1

KERN

4-wire "S" measuring cell made of nickel-plated steel for force and mass measurement



Dimension (W×D×H)	76,2×101,6×27,2 mm
Material	steel, nickel-plated
Cable length	6 m
Mounting - force application	Threaded hole M20 × 1,5
Mounting - force dissipation	Threaded hole M20 × 1,5

Functions

IP protection - complete device	IP67
---------------------------------	------

Environmental conditions

Use temperature [Min]	-10 °C
Use temperature [Max]	40 °C
Ambient temperature [Min]	-35 °C
Ambient temperature [Max]	65 °C
Storage temperature [Min]	-40 °C
Storage temperature [Max]	70 °C

Packing & Shipping

Readability force [d] (N)	1 d
Dimensions packaging (W×D×H)	205×170×60 mm
Net weight	1,292 kg
Shipping method	Parcel service
Net weight approx.	1,4 kg
Gross weight approx.	1,4 kg
Shipping weight	1,399 kg

Services (optional)

Article number for factory calibration (tensile force)	961-165V
Article number for factory calibration (compressive force)	961-265V
Article number for factory calibration (tensile force/ compressive force)	961-365V

Pictograms

STANDARD



OPTION



Category

Brand	Sauter
Product category	Measuring cell
Product group	Load/force measuring cell
Product family	CS P1

Measuring System

Weighing capacity [Max]	2500 kg
Load cell connection	4-wire
Load cell OIML class	C3
Load cell - Resolution (verifiable)	3000 e
Load cell - characteristic value - nominal	2 mV/V
Load cell - Y-value	10000
Load cell - Combined error	0,02%
Measuring applications	force mass
Load cell - Input resistance - nominal	350 Ω
Load cell - Output resistance - nominal	351 Ω
Load cell - Isolation resistance - [Min]	500 MΩ
Measuring range force [Max] (N)	25 kN
Directions of force	tension compression

Approval

CE mark	✓
---------	---

Construction

Design	"S" shaped cell
--------	-----------------